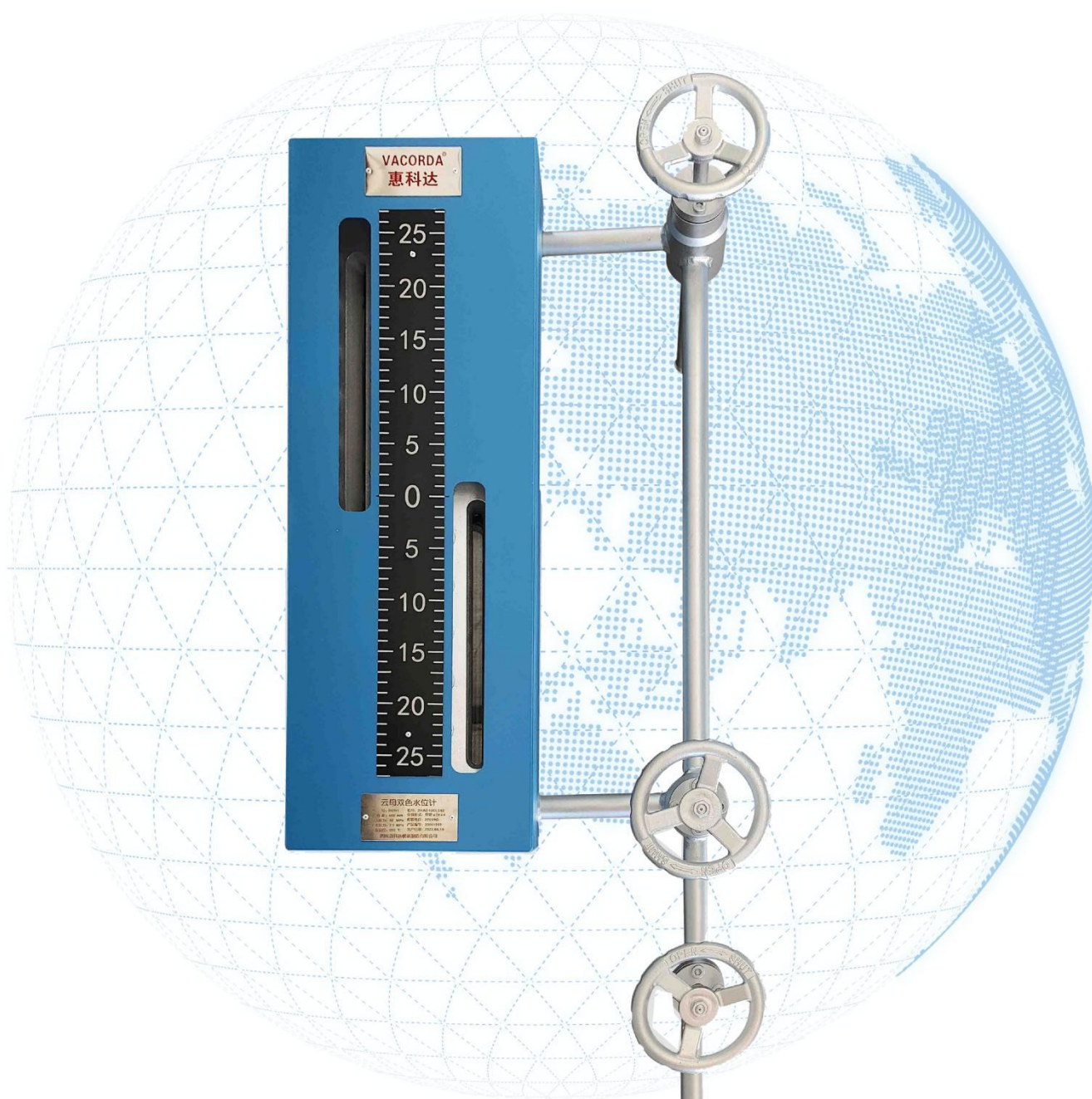


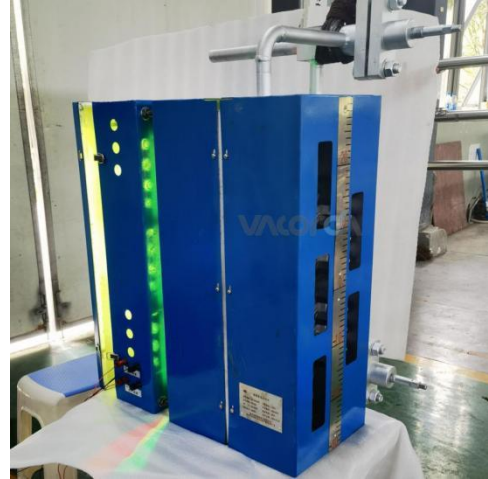
Product Manual

High Pressure Bicolor Glass Plate Level Gauge (For Boiler)



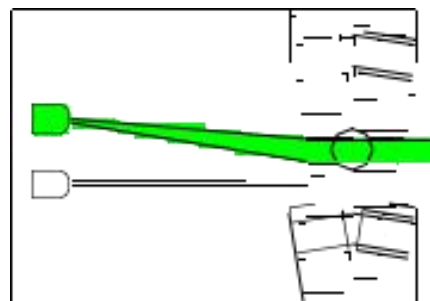
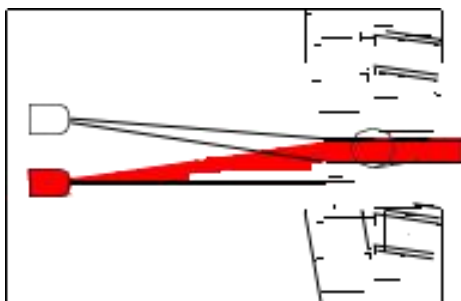
1. Overview

The observation hole of this water level gauge is on two straight lines in the length direction of the watch body, and the middle blind area is eliminated by staggered combination of observation holes. The red and green light emitted by the light-emitting diodes are directed to the observation window of the watch body respectively. In the vapor phase part of the watch body, the red light is directed straight ahead, while the green light is slanted to the wall and absorbed; at the same time, in the liquid phase part, due to the refraction of the water, the green light is directed straight ahead, and the red light is absorbed obliquely to the wall. Therefore, if you look straight ahead, you will get steam red and water green; steam full red and water full green display.

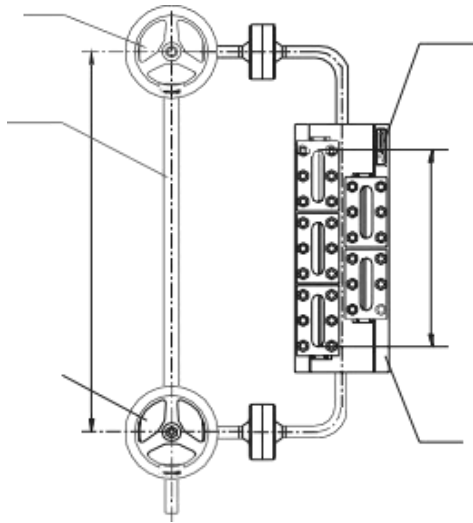


2. Working principle

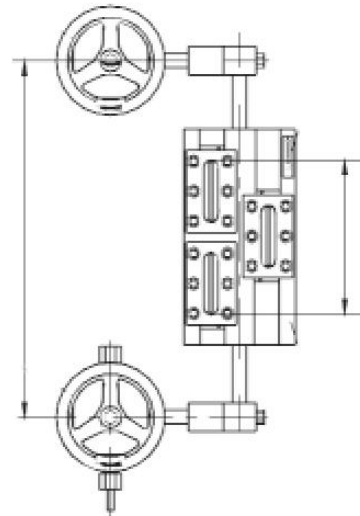
B69H type non-blind area two-color water level gauge is mainly composed of meter body, valve, light source assembly (light source cover, observation cover) and adjustable power supply. It is a high temperature and high pressure on-site liquid level monitoring instrument designed and manufactured mainly for monitoring the water level of the steam drum of large thermal power generating unit boilers. It can also be widely used in liquid level monitoring in other industries such as petroleum and chemical industries. Supporting TV monitoring system can realize long-distance monitoring.



3. Product reference structure

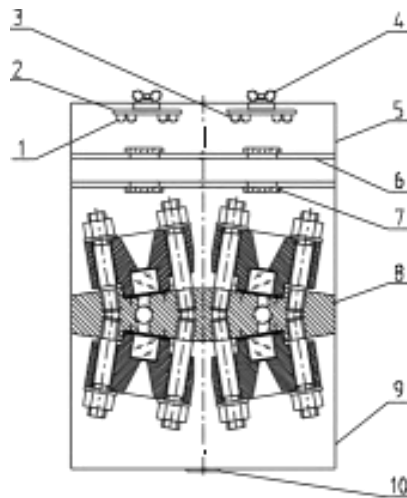


B69H-16~32/2-W



B49H-10/2-W

1. Red light diode
2. Aluminum profile light stand
3. Green light diode
4. Wing nut
5. Light source cover
6. Insulation board
7. Insulation glass
8. Body
9. Observation cover
10. Scale



4. Technical parameters

Model	B49H-10/2-W	B69H-16/2-W	B69H-25/2-W	B69H-32/2-W
Nominal Pressure	10MPa	16MPa	25MPa	32MPa
Working Pressure	≤6.4MPa	11.5MPa	15.5MPa	21.5MPa
Process Connection	DN20 PN10	Welding Ø28×4mm		
Working Temperature	Saturated steam temperature			
C to C（mm）	440、600、670	600、670、685、1026、1130、1270		
Visible Length（mm）	250、300、420	300、420、430、460、480、550、670		
Lights	LED			
Customization for other special requests.				

5. Reference dimension

B49H-10/2-W

C to C (mm)	Seal Assembly Specifications (mm)	Windows	Body Length (mm)	Visible Length (mm)
440/ 600	100x44	5	425	306
	142x44	3	425	300
	290x44	1	360	250
670/ 800	155x44	5	580	460
	142x44	5	540	420
	100x44	7	545	430

B69H-16~25/2-W

C to C (mm)	Seal Assembly Specifications(mm)	Windows	Body Length (mm)	Visible Length (mm)
600	100x44	5	425	306
	142x44	3	425	300
670//1026	155x44	5	580	460
	142x44	5	540	420
	100x44	7	545	430
	100x44	9	660	550

B69H-32/2-W

C to C (mm)	Seal Assembly Specifications(mm)	Windows	Body Length (mm)	Visible Length (mm)
670/ 685	142x44	5	600	480
	100x44	7	545	430
1130/ 1270	142x44	7	785	670
	100x44	9	660	550
	100x44	11	785	670

6. Reference Pictures:



LED light power box:

power 35W, input is 200~240VAC/50Hz, output is 3.5VDC with continuous voltage regulation function.

Note: For other special requests, we provide customization.



Chengdu JSH New Material CO., LTD.

WEB : www.instrava.com

Email : info@instrava.com

Whatsapp



Wechat



Manufacturer 1 : Zigong City, Sichuan Province, China

Manufacturer 2 : Chengdu City, Sichuan Province, China