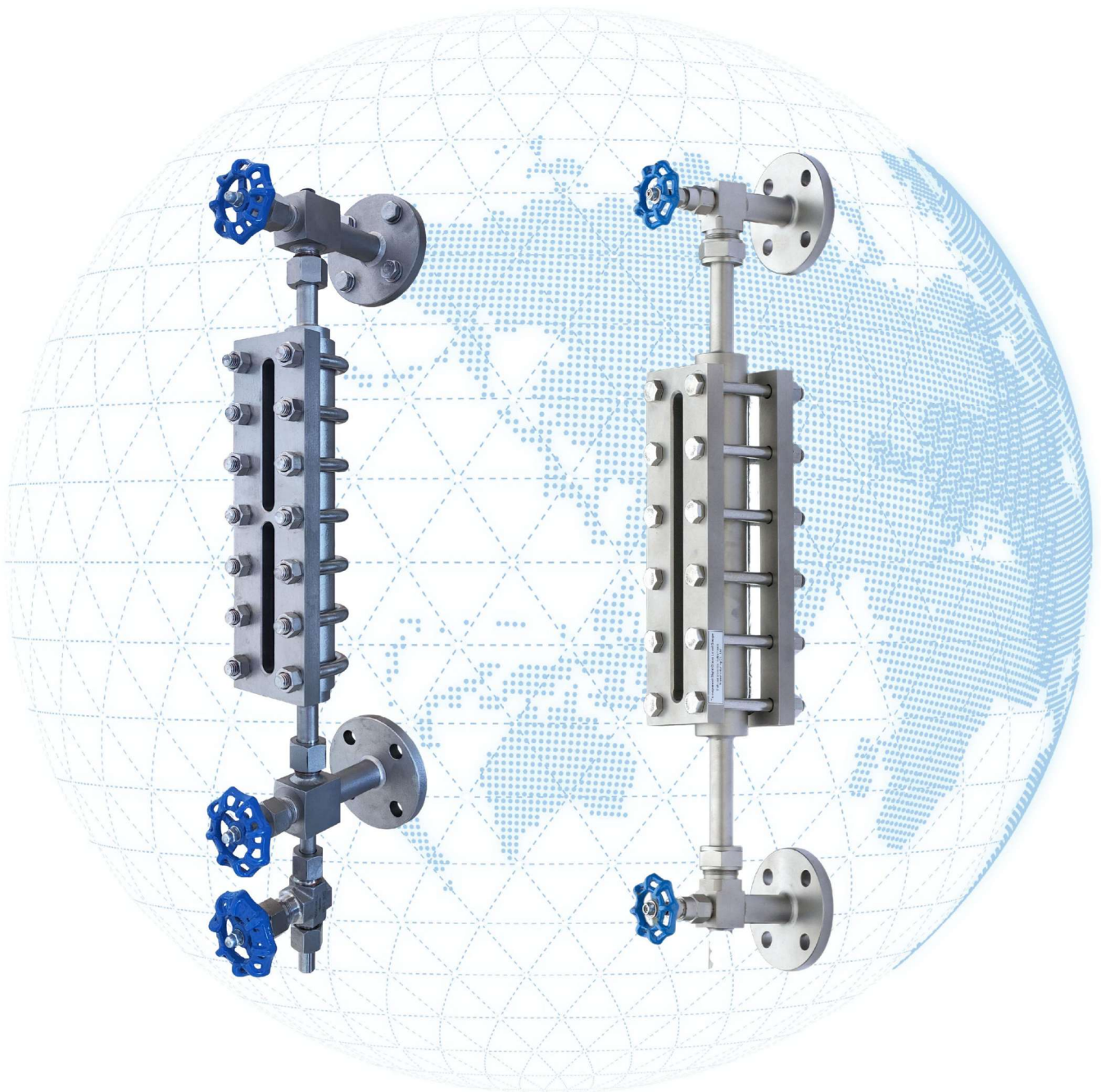


Product Manual

Glass Plate(Transparent&Reflex) Level Gauge



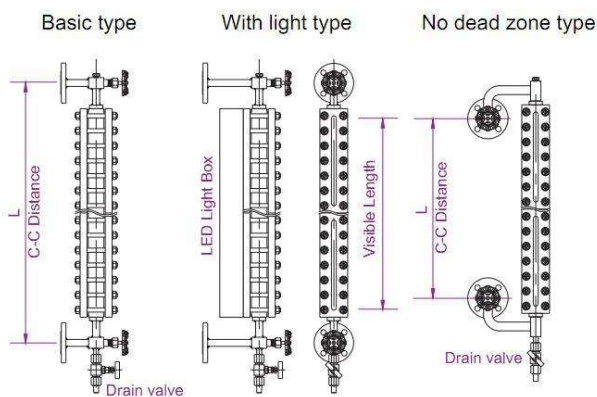
Working principle:

Glass plate level gauge is divided into three kinds: Transparent type, reflection-type and sight glass type. The level gauge is mainly composed by level gauge's body, upper valve (gas valve), lower valve (liquid valve), drain valve, insurance steel ball and so on. When the glass plate has some cracks or be damaged, and the pressure of liquid& gas phase side no less than 0.3MPa, the insurance steel ball will automatically stop the side valve of gas and liquid to avoid or reduce flowing. So, the worker can cut off the bottom valve to handle it. This series product is stable, sealed and reliable, simple installation, which is ideal instrument for detecting for liquid level in all kinds of containers with middle or low pressure.

Connecting the upper and lower flanges of this level gauge with the upper and lower flanges of the container to form a connecting vessel, then the height of liquid can be directly seen.

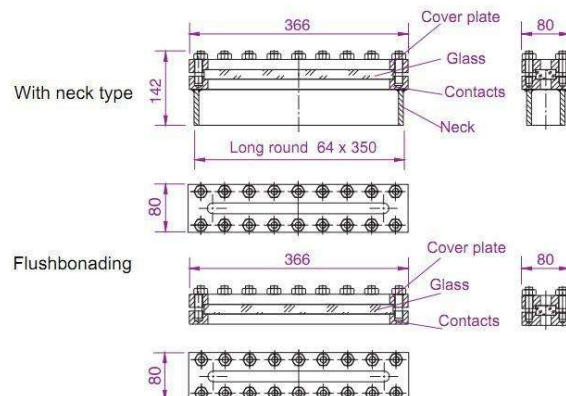
Structure:

Transparent & Reflex type



Note: Transparent type can match the LED light

Sight glass type



Note: The length of gauge can be customized by clients.

Transparent(T): There are transparent glass& cover in front and back of the level gauge, light can pass through.

Refelex(F): There are transparent glass& cover only in front of the level gauge, light cannot pass through.

Technical parameters:

| | |
|------------------------------|---|
| Recommended C-C distance: | 500, 550, 800, 850, 1150, 1450, 1750mm |
| Visible length: | 260, 560, 860, 1160, 1460mm |
| Material: | Carbon steel, SS304, SS316L |
| Nominal pressure (MPa): | 1.6, 2.5, 4.0, 6.4, 10.0, 16.0, 20.0, 26.0MPa |
| Working temperature: | ≤450℃ |
| Connection flange: | DN25 HG/T 20592-2009 |
| Steel ball closing pressure: | ≥0.3MPa |
| Light: | LED, 24VDC, 220VAC, non-explosion proof |

How to order:

| | | | | | |
|--|---------|---------------|---------------|--------------------|----------------------|
| 1. Flange sealing surface | | | | | |
| A - RF | | B - M | | X - Customization | |
| 2. Level gauge type | | | | | |
| T-Transparent type | | R-Reflex type | | S-Sight glass | |
| 3. Nominal pressure(Unit: MPa) | | | | | |
| Just directly write the pressure value | | | | | |
| 4. Body material | | | | | |
| I | II | V | III | X | |
| Carbon steel 20# | SS304 | SS316L | CS+Lining | Customization | |
| 5. Operating temperature | | | | | |
| H-≤80℃ | | I- ≤150℃ | | J- ≤250℃ | |
| 6. Structure | | | | | |
| B | W | F | N | J | Q |
| Basic type | Heating | Anti-Frost | No blind area | With neck (S type) | Insert type (S type) |
| 7. C-C distance | | | | | |
| Directly write the distance L, unit:mm | | | | | |
| 8. Drain connection | | | | | |
| N-Without | | P-Plug | | V Valve | |
| 9. LED light source (Option) | | | | | |
| N-Without | | D1-24VDC | | D2-220VAC | |
| | | | | T-Solar | |
| HK-1 2 3 4 5 6 7 8 9 | | | | | |



Chengdu JSH New Material CO., LTD.

WEB : www.instrava.com

Email : info@instrava.com

Whatsapp



Wechat



Manufacturer 1 : Zigong City, Sichuan Province, China

Manufacturer 2 : Chengdu City, Sichuan Province, China